

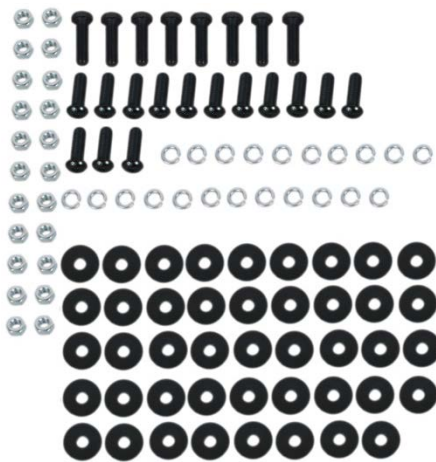


INSTALLATION INSTRUCTIONS

PART No.

FB22005

**Jeep® JK Wrangler
Front Winch Bumper w/ Full Grille Guard**

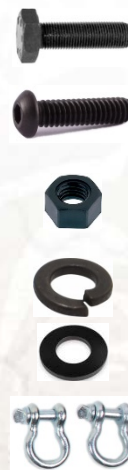


REQUIRED TOOLS

- 6mm Allen
- 16mm Wrench
- 16mm Socket
- 14mm Wrench

KIT CONTAINS

- M10 Hex Bolt
- M10 Button Head Screw
- M10 Hex Nut
- M10 Lock Washer
- M10 Flat Washer
- D-Rings
- Cube Lights



- QTY**
- 8
 - 14
 - 22
 - 22
 - 44
 - 2
 - 2

2200500

INSTALLATION INSTRUCTIONS

PART No.

FB22005

Jeep® JK Wrangler Front Winch Bumper w/ Full Grille Guard

1) REMOVE YOUR FACTORY BUMPER

Begin by removing your factory bumper. Ensure you disconnect your factory fog lights before you pull your bumper away.

2) PREP YOUR NEW BUMPER FOR INSTALL

Before installing your bumper on your Jeep, we suggest attaching your grille guard, lights, winch and fairlead (if applicable)

INSTALL YOUR CUBE LIGHTS

Using the supplied hardware that came in the LED kit, secure them to the bumper



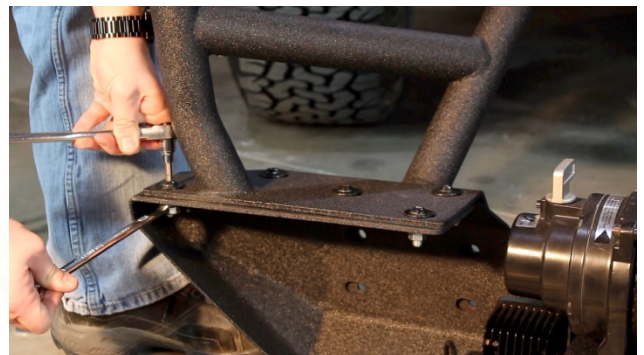
INSTALL YOUR FAIRLEAD AND WINCH

We recommend installing the fairlead first as you'll have access to the bolts at this time. Follow the instructions that came with your winch to install the fairlead and winch body to the pre-drilled holes on your new bumper.



INSTALL YOUR BOLT-ON GRILLE GUARD

Using one (1) M10 bolt, one (1) M10 lock washer, two (2) M10 flat washers, and one (1) M10 nut per hole, secure your grille guard to the top side of your bumper utilizing the fourteen (14) through holes. The front face of the guard will be secured when the bumper is attached to your Jeep.



3) INSTALL YOUR BUMPER

2 PERSON LIFT



WITH THE WEIGHT OF THE WINCH AND BUMPER, IT IS HIGHLY ADVISED TO HAVE HELP WHEN INSTALLING THE BUMPER!

Jeep® JK Wrangler Front Winch Bumper w/ Full Grille Guard

CAUTION

WITH THE SIZE OF THE GRILLE GUARD, WE RECOMMEND OPENING THE HOOD OF YOUR JEEP AND PLACING TOWELS OR RAGS ON YOUR GRILLE TO PROTECT IT FROM THE GRILLE GUARD AS YOU BOLT YOUR BUMPER IN PLACE.

With the help from a second pair of hands, lift the bumper up to the frame of the Jeep. Using the M10 hardware, insert an M10 bolt and washer through the front of the bumper and into the bumper bracket on the Jeep frame. Secure each bolt with an M10 flat washer, M10 lock washer, and M10 nut. Repeat this for all eight (8) bolts.

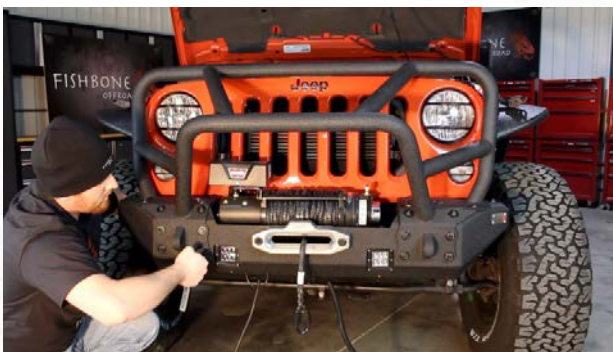


5) **RUN YOUR WIRING**

Wire in your new LED lights. To utilize your OEM for light switch, you can splice these into your OEM fog light harness.

Wire your winch according to the winch manufacturer's instructions.

6) **ENJOY YOUR NEW FISHBONE OFFROAD BUMPER!**



4) **MOUNT YOUR D-RINGS**